



# Avenger™ HT

Project \_\_\_\_\_  
 Item \_\_\_\_\_  
 Quantity \_\_\_\_\_  
 CSI Section 11400 \_\_\_\_\_  
 Approval \_\_\_\_\_  
 Date \_\_\_\_\_

## Models

- Avenger™ HT



## Standard Features

- Automatic fill
- Push button start
- Labyrinth type door design
- Automatic pumped drain for floor and wall drain installations
- Pre-installed water pressure regulator
- Stainless steel wash pump
- Electro mechanical components
- Manual override for extended wash and deliming
- Simplified controls allow easy access for operation and service
- Door safety switch
- Pumped drain
- One (1) each peg and combination rack included
- Above water scrap tray
- Built-in detergent and rinse pump

## Mandatory Specs

- Specify voltage

## Optional Features

- Scaltrol
- Water Hammer Arrestor
- Back Panel

## Accessory Items

- 36 Compartment Racks 4-1/8", 5-5/8", or 7" (105 mm, 143 mm, 178 mm)
- Combination Rack
- Peg Rack
- Machine stand 6" or 18" high (152 mm or 457 mm)

## Specifications

Uses 1.1 gallons (4.2 liters) of water per rack

Uses 26.4 gallons (99.9 liters) of water per hour

Cleans 24 racks per hour

Two minute automatic cycle

Powerful 3/4 HP wash pump motor

Built-in booster heater

Fresh water rinse eliminates wash water contamination

Air insulated between body and stainless steel housing

Sani-Sure™ feature assures proper rinse water temperature

304 stainless steel construction

Unique timer allows the machine to be customized for extended cycle times



Highway 25E  
 P. O. Box 1060  
 Barbourville, KY 40906

Tel: 606-523-9795  
 Tel: 1-888-800-5672  
 Fax: 606-523-9196  
 E-mail: info@jacksonmsc.com

[www.jacksonmsc.com](http://www.jacksonmsc.com)  
 7610-003-34-02 (04/07)



# Jackson

## Avenger™ HT

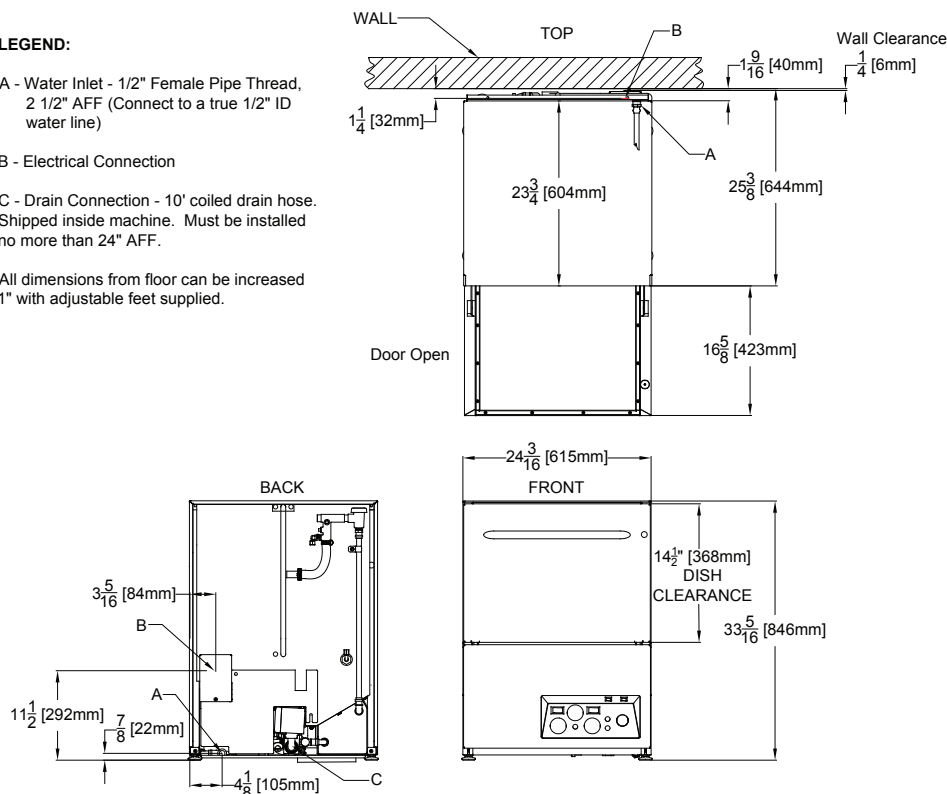
**LEGEND:**

A - Water Inlet - 1/2" Female Pipe Thread, 2 1/2" AFF (Connect to a true 1/2" ID water line)

B - Electrical Connection

C - Drain Connection - 10' coiled drain hose. Shipped inside machine. Must be installed no more than 24" AFF.

All dimensions from floor can be increased 1" with adjustable feet supplied.



MACHINE DIMENSIONS				
INSIDE CLEARANCE HEIGHT	INSIDE CLEARANCE WIDTH	INSIDE CLEARANCE DEPTH	DOOR OPEN DEPTH	WALL CLEARANCE (MINIMUM)
14-1/2 (368 mm)	20" (508 mm)	20" (508 mm)	42" (1067 mm)	1/4" (6 mm)

SHIPPING DIMENSIONS					
WEIGHT	CLASS	CUBE	HEIGHT	WIDTH	DEPTH
248 lbs (112kg)	92.5	19.8 cu. ft.	38" (965 mm)	30" (762 mm)	30" (762 mm)

APPROXIMATE TOTAL LOAD AMPS	
208/60/1	38.8
230/60/1	42.3

OPERATING CAPACITY	
Racks per hour	24
Dishes per hour	600
Glasses per hour	864

ELECTRICAL REQUIREMENTS	
Wash pump HP	3/4

OPERATING CYCLE	
Wash cycle (Seconds)	82
Drain time (Seconds)	28
Rinse time (Seconds)	10
Total cycle (Seconds)	120

WATER REQUIREMENTS	
Gallons per rack	1.1 gal 4.2 liters
Gallons per hour	26.4 gal 99.9 liters
Flow pressure (PSI)	15 - 25
Waterline size (IPS)	1/2
Drainline size OD	1 3/8

OPERATING TEMPERATURES	
Wash	150 ° F / 65.6 ° C
Rinse	180 ° F / 82.2 ° C

HOW TO SPECIFY - EXAMPLE:  
Avenger™ HT

Highway 25E  
P. O. Box 1060  
Barbourville, KY 40906

Tel: 606-523-9795  
Tel: 1-888-800-5672  
Fax: 606-523-9196  
E-mail: info@jacksonmsc.com

www.jacksonmsc.com  
7610-003-34-02 (04/07)

